



OUR COMPANY

American Electric Power is a multinational energy company based in Columbus, Ohio. AEP owns and operates more than 42,000 megawatts of generating capacity, making it America's largest generator of electricity.

Cook Nuclear Plant is a dual-unit nuclear power plant generating over two thousand megawatts of electricity, enough to meet the residential, commercial, and industrial electric power needs of a city the size of Detroit.

Cook began safely producing low-cost energy in 1975. It is silhouetted against the shoreline of Lake Michigan on one of the premiere glacially-formed sand dune eco-systems in the world. The plant utilizes many safety systems to ensure that both the environment and public are protected. There are approximately 1,300 AEP employees working and living in Southwest Michigan and Northern Indiana.

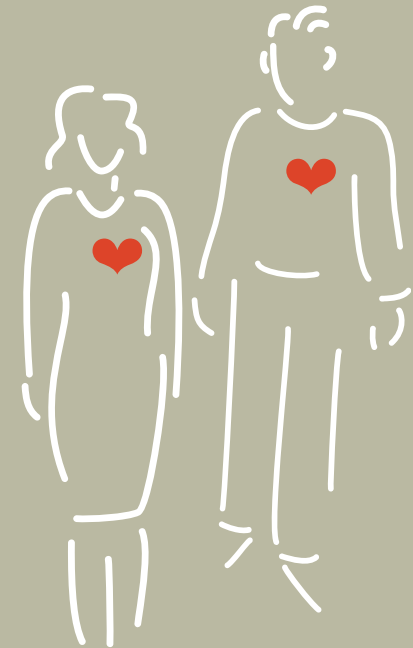
AEP is also a leading wholesale energy marketer and trader. It provides retail electricity to more than five million customers worldwide and has holdings in the U.S. and select international markets.



One Cook Place
Bridgman, Michigan 49106
Phone: 800.548.2555
Fax: 269.466.2907
Email : cookinfo@aep.com



COOK NUCLEAR PLANT



- Furthering Education
- Supporting Human Services
- Protecting the Environment



800.548.2555



OUR VISION

The Heart of Cook will be a leader in furthering education, supporting human services, and protecting the environment through a continued commitment to local communities in the AEP service area.

FUNDING EMPHASIS

Our three primary funding areas are:

- ♥ Furthering Education
- ♥ Supporting Human Services
- ♥ Environmental Preservation and Protection

We take special pride in supporting organizations and projects in which our employees participate or take a leadership role. The partnership of corporate contributions and employee initiatives typically results in improved outcomes.

OUR COMMITTEE

We are an employee-developed and driven organization that provides contribution proposals to senior management. Members represent a cross-section of organizational structure and demographics.

GUIDELINES

Request a grant application by contacting us using the information at the far right. Grant applications should be received in the fall for consideration for the following year's grants. Smaller requests will be considered on a quarterly basis.

FOCUS AREAS

FURTHERING EDUCATION

To promote economic development and provide for a well-trained and available work force in the area, we will contribute to programs that build work skills, and to educational organizations and projects that supplement professional development for educators and volunteers. Projects that specifically target science and mathematical disciplines, as well as development in impoverished communities are given priority.

HUMAN SERVICES

Strong families are the building blocks for successful communities and businesses. We will fund programs and organizations that nurture children and youth, help foster independence for those in need, ensure safety and support of older individuals, and teach parenting skills.

PROTECTING THE ENVIRONMENT

As an energy provider located in a particularly beautiful and unique ecosystem, we recognize the importance of protecting, restoring and enhancing our natural surroundings. We contribute to organizations and projects supporting these types of environmental activities.



ADDITIONAL CRITERIA

While there are many worthwhile causes and projects that deserve funding, resources are limited. Given AEP's generous corporate contribution, priority will be given to organizations not already funded by United Way. We are particularly interested in proposals that:

- ♥ Identify specific measurable outcomes with program evaluation methods
- ♥ Address emerging needs or provide innovative solutions to existing needs
- ♥ Focus on prevention

In general, we do not make contributions to support: individuals, tickets for contests, raffles, or other activities with prizes; religious organizations (unless the request is for a non-religious activity that supports the overall community); fraternal organizations; capital campaigns, endowment funds, academic chairs or fellowships; debt-reduction campaigns; political or partisan organizations or events; sports tournaments or teams; trips or tours for individuals or groups; and talent or beauty contests.

